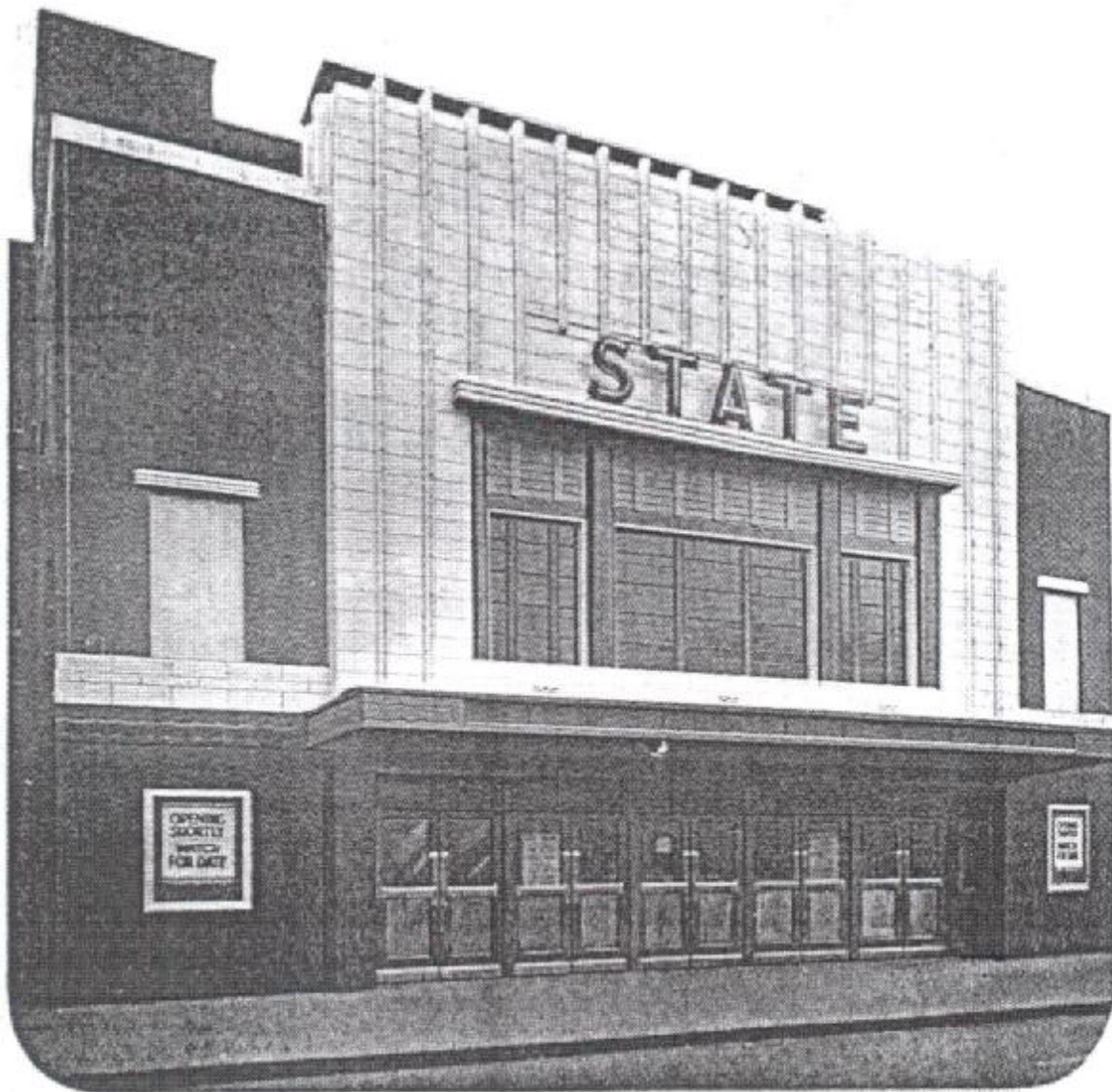




STATE
SPITAL STREET, DARTFORD





STATE

SPITAL ST., DARTFORD

souvenir

programme

This Theatre has been erected by

WILLIAM F.

BLAY

LIMITED

BUILDERS & CONTRACTORS

- We Specialise in Modern Cinema Construction, Good Workmanship and Speedy Erection for this and every type of Building Work

SOME RECENT CONTRACTS INCLUDE

THE CAPITOL CINEMA, WALTON
THE SAVOY THEATRE, FOLKESTONE
THE CAPITOL CINEMA, CATERHAM
THE ROYALTY THEATRE, KENSINGTON
THE CAPITOL CINEMA, UPMINSTER
THE PALACE CINEMA, KENSAL RISE
THE QUEENS CINEMA, BAYSWATER
THE SCALA THEATRE, DARTFORD
THE ODEON THEATRE, KINGSTON-ON-THAMES
THE CAPITOL CINEMA, ST. ALBANS
THE MAYFAIR CINEMA, BECONTREE
THE ODEON THEATRE, BOGNOR REGIS
THE PLAZA CINEMA, SUTTON
THE PRINCE OF WALES, HARROW RD., W.
THE ODEON THEATRE, SURBITON
THE HAYANA CINEMA, ROMFORD
THE RENDEZVOUS CINEMA, CAMBRIDGE
THE TOWERS CINEMA, HORNCHURCH
THE PAVILION CINEMA, MAIDSTONE
THE PALACE CINEMA, MAIDSTONE

RAILWAY HOUSE, DOWGATE HILL, E.C.4
And at DARTFORD, KENT

Telephones - - CITY 5462 : DARTFORD 88

**"SOUND PICTURES
AT THEIR
BEST"**

**THIS THEATRE
IS INSTALLED
WITH
THE**



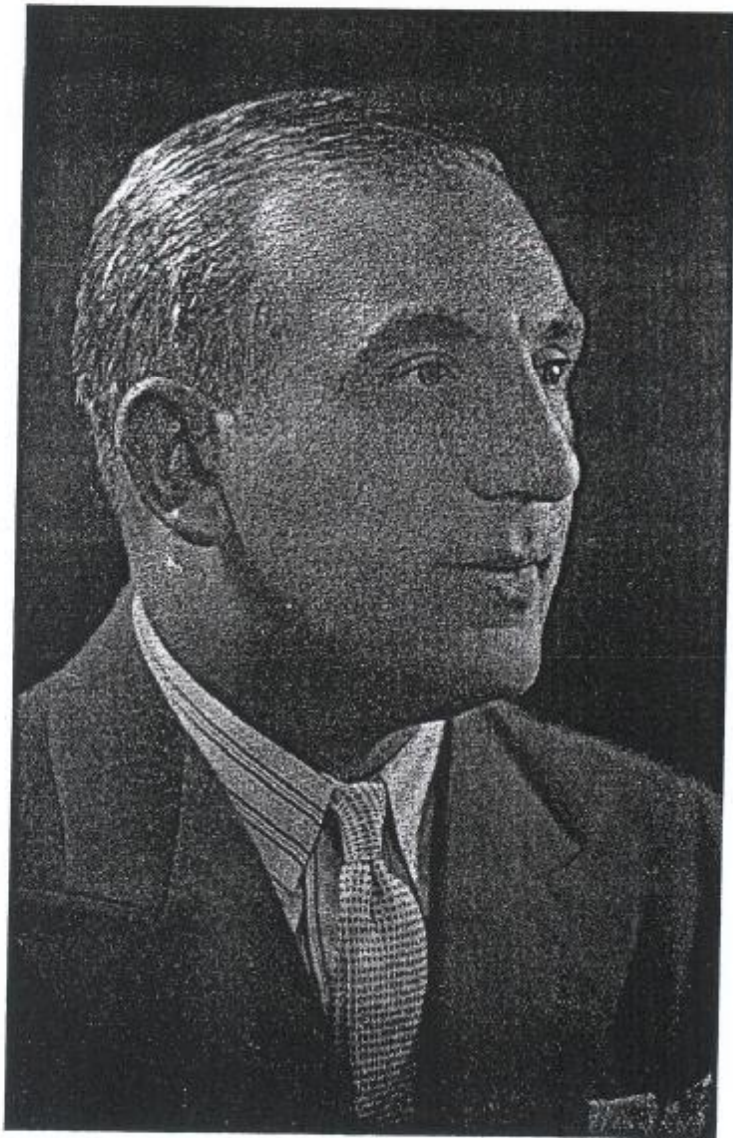
Wide Range

**QUALITY OF SOUND REPRODUCTION IS
ASSURED WITH WESTERN ELECTRIC!**

**A SOUND SYSTEM THAT IS INSTALLED IN
OVER 1750 OTHER BRITISH CINEMAS.**

**WESTERN ELECTRIC ARE ACKNOWLEDGED
THROUGHOUT THE WORLD AS LEADERS IN
MOTION PICTURE ENGINEERING.**

WESTERN ELECTRIC CO · LTD · BUSH HOUSE · ALDWYCH · LONDON · WC2



E. L. MANCHES, Direction

UNDER THE DIRECTION OF J. STINTON JONES, M.I.Mec.I., M.I.E.E., Consulting Engineer

ELECTRICAL INSTALLATION

BY

BECTIVE ELECTRICAL CO. LTD.
36, DAVIES STREET - - - LONDON, W.1

PHONE : MAYFAIR 7133
3 LINES

STATE THEATRE, DARTFORD

THE WHOLE OF THE
STEELWORK
FOR THIS CINEMA WAS FABRICATED
AND ERECTED COMPLETE BY

ARCHIBALD
D.

DAWNAY

& SONS
LTD.

STEELWORKS ROAD,
BATTERSEA, S.W.11

Branches :
SWANSEA, WELWYN GARDEN CITY, CARDIFF,
NORWICH AND SOUTHAMPTON

BRITISH-I-STEEL

Other Contracts include :
Regal, Bexley Heath ; Queen's Cinema, Bayswater ; Plaza, Sutton ;
Gaumont, Chester ; Forum, Ealing ; Odeon, Haverstock Hill

● AN ARCHITECTURAL TRIUMPH IN

● MODERN THEATRE CONSTRUCTION



Mr. J. STANLEY BEARD, F.R.I.B.A.

Cinema design during the past few years has been undergoing a change, and the keen observer will have noticed that the traditions of the past, some good and some bad, have in many cases been laid ruthlessly aside, and a new and more severe style is taking their place. It may be that in a few years this new style will be discarded by the cinema public, but in the meantime the Architects for this new cinema, Messrs. J. Stanley Beard, F.R.I.B.A. and W. R. Bennett seem to suggest that, compared with the rather restless uniform styles of modern art, a reversion to the more simple and beautiful proportions of the classic period may be a relief, and this cinema has been designed on classical principles, which are over 2,000 years young.

The State, Dartford, has been planned and designed in accordance with modern practice, which provides every comfort and convenience for the patrons and particular attention has been given to the shape and treatment of the Auditorium in order to obtain the perfect side lines and acoustics.

The entire scheme of the whole theatre is carried out in tones of beige and antique bronze with gold and green decoration. The proscenium is flanked by a splayed wall, the main motif of which is a continuous grill, which is used for ventilating purposes. On either side of this grill light tone stencil designs are carried out in pastel shades on a beige background.

The State, Dartford is ventilated and heated by means of a Plenum ventilating plant through which one and a half million cubic feet of fresh, clean, washed and warm air is pumped into the auditorium and the vitiated air extracted to the atmosphere.

It can be safely said that this theatre is entirely electrical employing as it does electrical current for the

use of electric motors, raising and lowering organ lift running the projector and spot arcs, and some idea of its magnitude can be gathered when it is realised that approximately some 900 lamps are used throughout this theatre.

The entrance to the Auditorium is through a pleasant foyer over which is a large and comfortable balcony lounge for the comfort of patrons whilst awaiting admission to the Auditorium.

A most excellent stage, well equipped for production of variety, is an important feature of the State. Stage artists will have the advantage of one of the best suites of dressing-rooms yet constructed in any theatre.

The exterior decoration of the theatre is terra-cotta with brick flanks. The central motif of the front elevation and the form of decorative windows set in a pale cream terra-cotta facing.

This theatre is built entirely of fire-resisting construction employing most modern methods of present-day building science, in order to provide complete safety for the occupants of the theatre, and for this reason the question of exits have been carefully studied.

The building is of steel frame construction, the steel work of which was carried out by the famous firm of Dawney. In a steel frame building the many loads are carried down by means of steel beams and stanchions on concrete foundations under the building.

The balcony is of cantilever construction, the loads being carried by the balcony girder, which has a clear span of 63 ft. and is 7 ft. 9 ins. deep, and weighing twenty tons.

The main roof is constructed of steel trusses also spanning to the full width of the auditorium.

A large car park at the rear of the theatre is available for the benefit of patrons.



Mr. W. R. BENNETT

● STATE WONDER ORGAN—A LEADING
 ● FEATURE OF MODERN ENTERTAINMENT

The Directors of the "State," Dartford, have made ample arrangements for the musical entertainment of their patrons by the installation of a Compton organ, fitted with the latest model illuminated console. The features of the famous Compton organ are so well known that it is not necessary here to go into great detail. Suffice it to say that the "State" instrument embodies all the tone colour of a full symphony orchestra, all the majesty of a grand organ, and all the verve and rhythm of a modern dance band.

However, the finest organ ever made will not produce music without an organist. There once again the directors have been extremely fortunate in securing the services of Mr. Percy Milton, whose career is certain proof of his ability as a musician of outstanding merit. Commencing his work in the Cinema world in 1921 he became musical director of an orchestra of 12. In 1926 deputised for Reginald Foort at The New Gallery and later gave recitals in Rotterdam, Amsterdam, Antwerp and Paris. A keen photographer and an accomplished artist, he has played at most of the leading London cinemas, including The Forum, Fulham, and Madame Tussauds and has proved himself a great showman.



Mr. Percy Milton at the console of the famous Compton Organ

★
 ★
 ★
 ★

COMPTON

THE BEST THEATRE ORGAN
 IN THE WORLD
 At the State Cinema, Dartford

The Proprietors of the State Cinema have made ample provision for the musical side of their entertainments by the installation of a Compton Theatre Organ. The instrument is equipped with the Compton Electrone Unit, which provides the most sensational and appealing Tonal Effects ever heard in a cinema. Another feature of the Organ is the wonderful Illuminated Console, or keydesk, which gives a remarkable range of ever-changing colours.

RECENT INSTALLATIONS INCLUDE :

Ritz	-	Maidstone	Astoria	-	Folkestone	Super Cinema	-	Gravesend
Luxor	-	Eastbourne	Regal	-	Sevenoaks	Savoy	-	Brighton
Majestic	-	Rochester	Regal	-	Bexley Heath	Astoria	-	Brighton
Astoria	-	Southend	Majestic	-	Gravesend	Granada	-	Hove
Odeon	-	Worthing	Dreamland	-	Margate	Plaza	-	Worthing

THE JOHN COMPTON ORGAN CO. LTD
 CHASE ROAD :: NORTH ACTON :: N.W.10

Telephone : WILLESDEN 6666

● PERFECTION IN CONSTRUCTION—WHY

● THE STATE DARTFORD IS UNIQUE

Striking Colour Scheme.

The general scheme is slightly classical and presents a striking and attractive facade to the potential picture-goer. It is permanent and dirt-proof, and will be easily washed by the application of soap and water. By the glaze used, it will lend itself readily to flood-lighting, so essential in modern entertainment house design.

The elevation is in a combination of brick and faience, the brickwork appearing on each side of the centre feature, which is in slab faience relieved with piers in block faience.

The body colour is a clean sparkling white, with the piers in black, attractively contrasted with a coloured ornamental frieze. The plinth is in black faience.

Security Steelwork.

The building, the steelwork for which has been carried out by the famous firm of Dawnay, is partially steel framed, with main loads from Entrance, Balcony, and main Roof carried down to concrete foundations through stanchions and grillages.

About 200 tons of steelwork have been used in construction, the principal girder supporting the balcony requiring 20 tons in itself. The main entrance of 30 ft. width was obtained only through the plate girder which carries the whole of the front wall. In addition steel was used in the provision of all the ceilings, over the auditorium, under the balcony and in the public foyers, illustrating the adaptability of steel to unusual shapes. Trusses of 65 feet span carry roof and ceilings over the auditorium, the heaviest of these being some 5 tons in weight.

The Electrical Installation, under the direction of J. Stinton Jones, M.I.Mec.I., M.I.E.E., was installed by Messrs. Bective Electrical Co., Ltd.

Perfect Sound Equipment.

Patrons of the State Cinema will be pleased to know that the new Wide Range reproducing system is installed in this theatre. Wide Range is the latest improvement developed by the Western Electric engineers. It will be remembered that Western Electric were the pioneers of talking pictures and owing to their vast research organisations they have been responsible for the great improvements in sound from the early days, and Wide Range is their latest scientific achievement. The enormous advantages to be gained with Wide Range are that it not only creates a greater intimacy between the audience and the screen artist, but that all the sound variations of speech and music are faithfully and naturally reproduced as if the artist were giving a living performance. Orchestral music, when reproduced on this system, shows a remarkable improvement. The individual instruments are heard in their true perspective and with all their original brilliance.

It is therefore with great pleasure that the State Cinema have the honour to present talking pictures under conditions which will equal the finest in America and Europe.

Attractive Lighting Effects.

The canopy at the front of the building is carried out in iron, the decorative motif following and lining up with the fireclay treatment to the waist of the building. The proportions were determined by the intention to raise Neon coloured lights to the soffit which is panelled out in rectangular spaces at varying levels.

- The
- STAGE
- DRAPERIES

AT THE
STATE, DARTFORD

- Were supplied by:—

REED, TRELEAVEN & Co. Ltd.

Theatre Furnishers

**SUFFOLK HOUSE, WHITFIELD PLACE
LONDON, W.1**

Phone: MUSEUM 7938

UNIFORMS

by

HAROLDS

*THE SPECIALISTS
in Every Form of Uniform*

FIT AND SATISFACTION
GUARANTEED

MATERIALS OF FINEST
QUALITY

Alfred Harold (Uniforms) Ltd.
86-88, WARDOUR STREET,
LONDON, W.1.

'Phone
Gerrard 6311-2.

'Grams
Uniforms, Rath, London.

AGENTS:

Mr. Irving Sands,
80 Brocco Bank,
Endcliffe,
Sheffield, 11

Mr. A. Ferguson
20 Winstanley Road,
Stechford,
Birmingham, 9

ALL LOCKS
and

MODERN DOOR
FURNITURE

to

THIS THEATRE

Supplied by

WALTER CASSEY LIMITED

90, HIGH HOLBORN, LONDON, W.C.1

TELEPHONE . . . CHANCERY 8726-8727

THE STATE
CINEMA

Fibrous Plasterwork
&
Decorations

E. G. PAYNE
LIMITED

TEL. 3363.

28 STANNARY ST.,
KENNINGTON,
S.E.11

● **SUMPTUOUS EQUIPMENT THE**

● **KEYNOTE OF LUXURIOUS COMFORT**

The still frames and the handrailing to stairways are made of aluminium, finished anodised satin silver.

The other items by Cashmore Art Workers consisted of Wrought Iron Grilles to radiators, and the Grilles in the openings for the pay Kiosk and Cigarette recess — this ironwork being treated in spray colour painting.

The rear walls above and below the balcony were treated with "Maycourtic-Asbestonite" from ceiling line to dado height. This acoustic product, to prevent echo and undue reverberation in the auditorium, was supplied and fixed by May Acoustics Ltd.

The Fibrous Plasterwork and Decorations were executed by E. G. Payne, Ltd.

All Stage Draperies were supplied by Messrs. Reed, Treleaven & Co., Ltd.

The uniforms were supplied by Alfred Harold (Uniforms) Ltd., of Wardour Street, London.

The colours adopted are very smart and effective, *i.e.*, maroon and rose, with silver braid.

The men look exceptionally well in Commis-suits, and the girls make an attractive show in the same colours. Altogether a very distinctive staff.

The Neon tube installation throughout was carried out by British Electrical Installations Co., together with the supply of the necessary converter from D.C. to A.C. supply.

This company also supplied the interchangeable lettering around the canopy for programme announcements.

All the windows were supplied by Williams and Williams, Ltd., the manufacturers of the well-known "Reliance" Metal Windows and Doors.

The locks, handles, door springs and general ironmongery to this cinema, have been supplied by Messrs. Walter Cassey, Ltd., the well-known firm of Architectural Ironmongers, who have recently completed some very fine cinemas, public buildings, etc., etc.

This firm were the originators and pioneers of coloured covered materials for handrailing, handles, finger-plates, etc., and these fittings help to carry out decorative colour schemes in many varying shades.

It will be gathered from the foregoing that every possible care and attention has been given in the construction of this theatre. From the point of view of comfort, it can be truthfully said that patrons of the State will find a theatre equal to any yet constructed.

NEON INSTALLATION

and

**"ELASTALUME" (Regd.) INTERCHANGEABLE LETTERED PANELS
IN THIS THEATRE**

Manufactured and Erected by :

BRITISH ELECTRICAL INSTALLATIONS Co.
8, PARTON STREET, LONDON, W.C.1. **PHONE: HOLBORN 1571**

Sole manufacturers of "Tempus" Electric Clocks for A.C. or D.C. supply

● **STATE THEATRE, SPITAL ST., DARTFORD**
 ● **FOR YOUR INFORMATION**

Proprietors:
 MEDWAY CINEMAS LTD.

Supervisor:
 DENNIS MARTIN

Organist:
 PERCY MILTON

Telephone:
 DARTFORD 2101

St. John's Ambulance Corps always in attendance. For the comfort of patrons, INFANTS in arms will not be admitted

Continuous Performance Daily 2 p.m. to 11 p.m. Doors Open 1.45 p.m.

ADMISSION PRICES (including Tax)

SEATS	EVENINGS	
	ADULTS	CHILDREN
Front Balcony - -	2/-	1/-
Back Balcony - -	1/6	9d.
Front Stalls - -	9d.	6d.
Centre Stalls - -	1/-	6d.
Back Stalls - -	1/3 & 1/6	9d.
SATURDAYS - -	Full Prices charged for children to all parts after 3 p.m.	
HOLIDAYS - -	No reduction for children	

THIS
SOUVENIR BROCHURE

was designed, printed and published by

JAMES WOOD

PRINTERS & PUBLISHERS

GENERAL ADVERTISING CONTRACTORS



25, FIELD STREET,
 KINGS CROSS, LONDON, W.C.1

Telephone - - TERMINUS 4755-6

● A PERSONALITY PLEDGED TO
 ● PRODUCE PERFECT ENTERTAINMENT



DENNIS MARTIN, Supervising Manager

Dennis Martin, Supervising Manager of The State, has achieved an unique position in the Cinema World, not only because of his valuable experience, which began with the Medway Cinemas Ltd., the proprietors of The State, but also because of his uncanny knowledge of knowing "What the Public Wants." He has served in all departments of the Entertainment Industry, including Orchestra, Stage and Projection Room. During the War he saw service as Hon. Lieutenant in the Royal Artillery.

In The State, Dartford, he has a theatre which will give him full scope to utilise his abilities to the utmost, and for this reason alone our patrons can rest assured that the entertainment to be presented will be as near perfect as is humanly possible to produce.

● FORTHCOMING ATTRACTIONS
 ● THE BEST IS JUST GOOD ENOUGH

Monday, December 30th, for Six Days
 Fred Astaire : Ginger Rogers

ROBERTA
 Cert. U

Jackie Cooper : Mary Astor

DINKIE
 Cert. U

Monday, January 6th, for Six Days
 Al Jolson : Ruby Keeler

CASINO DE PAREE
 Cert. A

Guy Standing : Richard Cromwell
GENTLEMEN OF THE NAVY
 Cert. U

Monday, January 27th, for Six Days

Helen Gahagan : Randolph Scott
SHE
 Cert. A

Monday, January 13th, for Six Days
 Tom Walls : Ralph Lynn

STORMY WEATHER
 Cert. A

James Dunn : Alice Faye
GEORGE WHITE'S 1935 SCANDALS
 Cert. U

Monday, January 20th, for Six Days
 Robert Donat : Madeleine Carroll

THE 39 STEPS
 Cert. A

Janet Gaynor : Warner Baxter
ONE MORE SPRING
 Cert. U

Jack Oakie : Burns & Allen
BIG BROADCAST
 Cert. U

Records used in the theatre are supplied by Messrs. Woodyer, Lowfield St., Dartford

● A TRIUMPH OF CO-OPERATION

THE PROPRIETORS OF THE STATE, DARTFORD, EXPRESS THEIR SINCERE THANKS TO:

General Contractors :
Wm. Blay, Ltd., 1, Dowgate Hill, E.C.4.

Consulting Engineer :
J. Stinton Jones, M.I.Mec.I., M.I.E.E.

Steelwork :

A. D. Dawney & Sons, Steelworks Road, Battersea, S.W.11.

Terra Cotta :

Shaws Glazed Brick Co., Witebirk, Darwen, Lancs.

Heating and Ventilating :

E. L. Maiden, Ltd., Bridge Wharf Works, Chalk Farm Road, N.W.1.

Grano Steps :

F. Bradford & Co., Angel Road Estate, Edmonton, N.18.

Caxton Floors :

The Caxton Floor Co., 16, Caxton Street, Westminster, S.W.1.

Cills and Coping :

Saml. Williams & Sons, 8, Lloyds Avenue, E.C.3.

Asphalte :

The Ragusa Asphalte Co., 25, Oxford Street, W.1.

Windows :

Williams & Williams, Victoria House, Southampton Row, W.C.1.

Fire Hydrants :

The Pyrene Co., Great West Road, Brentford.

Electrical Work :

The Bective Electrical Co., 36, Davies Street, W.1.

Plumbing :

H. S. Thorne, 16, Templar Street, Camberwell, S.E.5.

Decorative Plaster :

Ed. G. Payne, Ltd., 28, Stannary Street, Kennington, S.E.11.

Plastering :

A. Marton, Ltd., 11, Pancras Lane, E.C.4.

Roofing :

The Atlas Stone Co., 15, Victoria Street, S.W.1.

Neon Lighting :

The British Electric Installations Co., 8, Parton Street, W.C.1.

Roof Lantern :

Haywards, Ltd., 187, Union Street, S.E.1.

Ironmongery :

Walter Cassey, Ltd., 90, High Holborn, W.C.1.

Tiling :

F. and E. Eastman, Ltd., 766, Old Kent Road, S.E.15.

Special Doors :

D. Burkle, Ltd., 174, Elthorne Road, N.19.

Acoustic Work :

Mays Acoustic Co., De Burge Road, S.W.19.

Sanitary Fittings :

Baldwins Limited, 91, Petty France, S.W.1.

Wood Block Floor :

Vigers Bros., Ltd., 26, Fish Street Hill, E.C.3.

Organ Lift and Curtain Gear :

Knight & Co., Winchmore Works, Chase Road, N.14.

Projection :

Walturdaw Cinema Supply Co., Ltd., 46, Gerrard Street, W.1.

Canopy and Still Frames :

Cashmore Art Works, 18, Balham Hill, S.W.12.

Lay Lights :

The Kingsmill Metal Co., 18, Strand-on-the-Green, W.4.

Lightning Conductor :

J. W. Gray & Son, 50, High Holborn, W.C.1.

Glazing :

Faulkner Greene & Co., 99, Redcross Street, S.E.1.

Fire Shutters :

W. J. Furse & Co., 9, Carteret Street, S.W.1.

Terrazzo Floors :

Diespeker & Co., 57, Holborn Viaduct, E.C.1.

Painting :

Decra Limited, 11, Hanbury Road, Acton, W.3.

Gas :

South Suburban Gas Co., Lowfield Street, Dartford, Kent.

Grilles and Handrails :

Cashmore Art Metal Works, 11, Balham Hill, S.W.12.

W.I. Stairs :

G. Edwards, Home Gardens, Hythe Street, Dartford, Kent.

Lighting.

F. H. Pride, 52, Gt. Marlborough Street, W.1.

Sound System :

Western Electric Co., Ltd., Bush House, Aldwych, W.C.2.

Uniforms :

Alfred Harold (Uniforms), Ltd., 86-88, Wardour Street, W.1.

Organs :

John Compton Organ Co., Ltd., Chase Road, Willesden, N.W.10.

Deaf Apparatus :

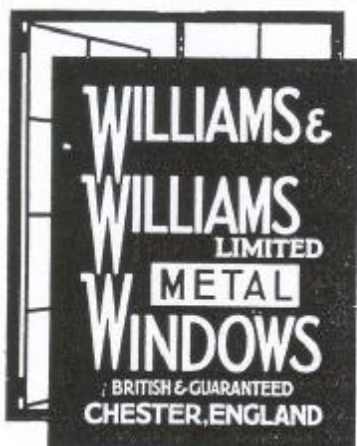
"Ardente," 309, Oxford Street, W.1.

Chairs :

H. Lazarus & Sons, Ltd., 10a, Gt. Eastern Street, E.C.

Stage Draperies :

Reed Treleaven & Co., Ltd., 1, Whitfield Place, W.1.



★ *Architects concerned with* **MODERN CINEMA CONSTRUCTION . . .**

... as witness the installation described in this brochure at the State Cinema, Dartford—find that Williams & Williams Metal Windows are superior to all others in meeting their requirements in design and efficiency. Externally, clean simple lines—internally, more light per square foot of window opening, better control of natural ventilation—and finally reduced maintenance costs. May we have your enquiry? Williams & Williams Ltd., Reliance Works, CHESTER. Phone: Chester 765-767. Grams: "Reliance, Chester." London Office: Victoria House, Southampton Row, W.C.1. Phone: Holborn 9861-5

Printed by James Wood at 23, Field Street, London, W.C.1. Tel. Terminus 475516.

PROGRAMME

PREMIER PERFORMANCE

MON., DEC. 23, 1935

1. FANFARE OF TRUMPETS
Trumpeters of His Majesty's Scots Guards
2. THE NATIONAL ANTHEM
3. OPENING CEREMONY
BY
The MAYOR & MAYORESS of DARTFORD
(Alderman and Mrs. Alec Webb)
Supported by FRANK CLARKE, Esq., M.P., J.P., C.C., and
Mrs. CLARKE, and The Rev. Canon ELLIOTT MITCHELL and
Mrs. MITCHELL
4. VIEWS OF THE NEWS
Gaumont-British Sound News

5. A COLOURED
FEATURETTE
6. A MUSICAL COCKTAIL
PERCY MILTON
at the Compton Organ
7. VICTOR McLAGLEN
IN
THE INFORMER
Cert. A